



Leg-Up Canteen

Assembly Instructions

Item #15012

#30015012

Step 1 Turn Canteen upside down and fill with water. Align the Base to the Canteen. Twist in either direction until the Base is secured to the Canteen.

Step 2 Turn Base and Canteen over and use the fold-out feet to stand on its own.



If you have any questions or concerns about this product contact our customer service department at 1-800-295-2243 Mon-Fri 8:00 – 4:00 MST or email us at cs@waremfginc.com



Leg-Up Canteen

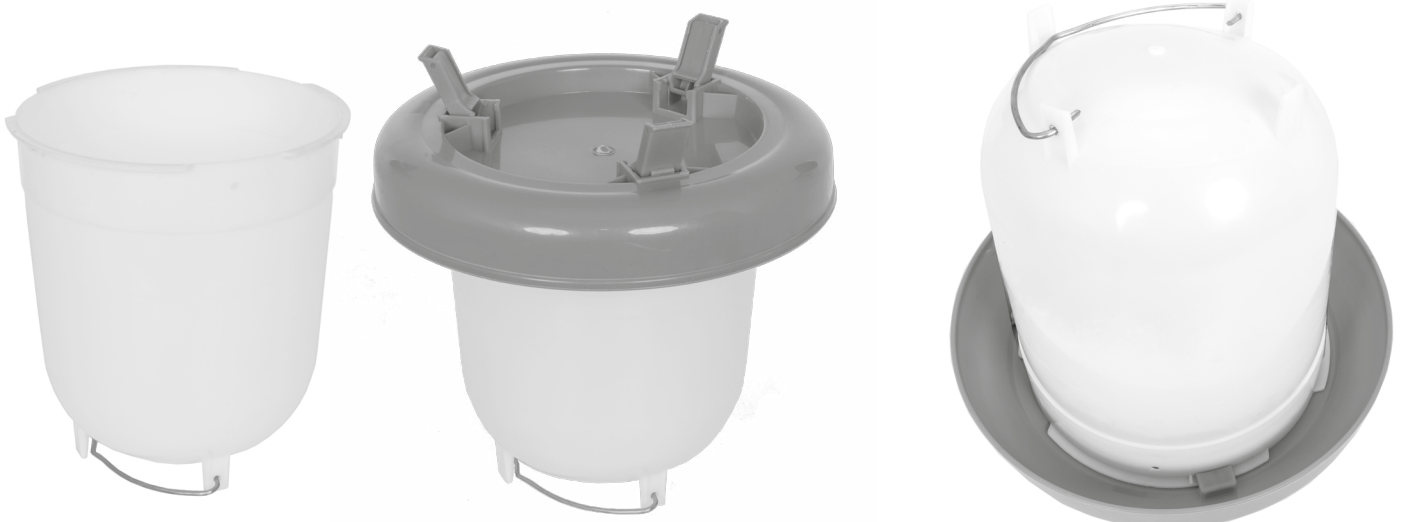
Assembly Instructions

Item #15012

#30015012

Step 1 Turn Canteen upside down and fill with water. Align the Base to the Canteen. Twist in either direction until the Base is secured to the Canteen.

Step 2 Turn Base and Canteen over and use the fold-out feet to stand on its own.



If you have any questions or concerns about this product contact our customer service department at 1-800-295-2243 Mon-Fri 8:00 – 4:00 MST or email us at cs@waremfginc.com