

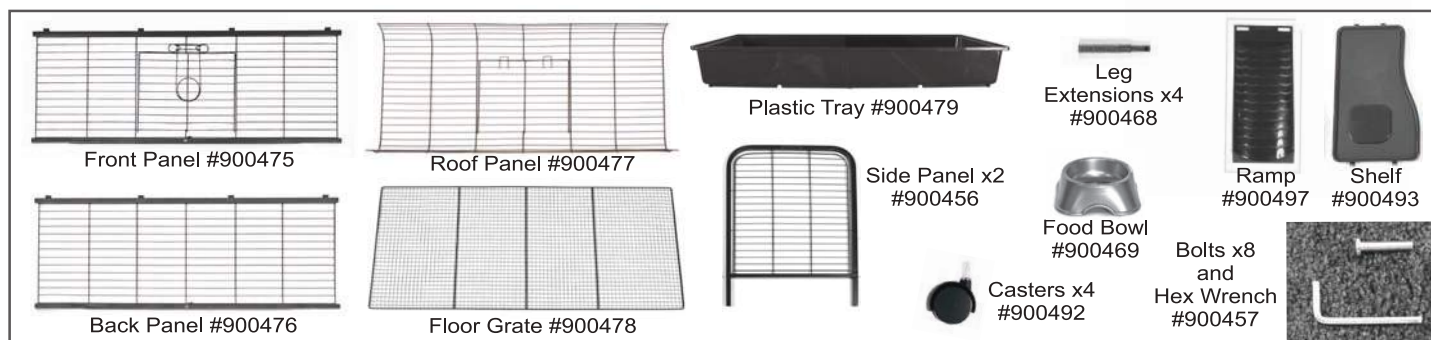


# LIVING ROOM SERIES RABBIT HOME

## Assembly Instructions

Item #01930

Revised 02/01/2011



### Step 1



Using the hex wrench, attach the back panel to the right side panel using 2 bolts. Make sure the support tabs, on the top rail, are open to the inside.

Attach the front panel in the same way, making sure the door opens out.

**TIP: Do not tighten bolts fully until all panels are in place.**

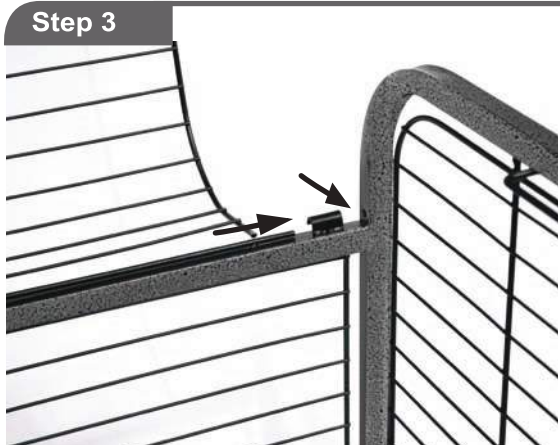
### Step 2



Tighten all bolts. Make sure that the support tabs on the top of the back and front rails are open towards the inside.



### Step 3



Attach the roof panel by sliding the right rear lower wire extension under the support tabs and into the hole on the side panel.

Slide the rest of the lower wire extension under the open tabs and into the hole in the left side panel.

Attach side panel with 4 more hex bolts and tighten all.



#### Step 4



The top roof panel should swing freely and close by latching into the front open tabs on the front top frame bar.



#### Step 5



Lay the cage on its side and attach the 4 casters to the leg posts.

Place the floor grate into the top of the plastic tray. Swing the locking tab on the front of the lower frame bar up while sliding them into the channels of the lower side frame bars.



#### Step 6



Attach the plastic ramp to the bottom side of the plastic shelf by snapping them into the plastic clips.

Place the assembled shelves and ramps in the cage through the door. Attach the shelf and ramp assembly to the 7th wire up from the bottom on the left side of the cage.



#### Step 7

Place food bowl on the shelf, you and your pet are now ready to enjoy its new home.



If your new pet home experienced damage during shipping, **DO NOT RETURN TO THE STORE**  
Contact our Cage Service Department to help with any problems, Mon. - Fri. 8:00 - 4:00 MST  
Call **1-800-295-2243** or visit us at: **[www.waremfinc.com](http://www.waremfinc.com)**