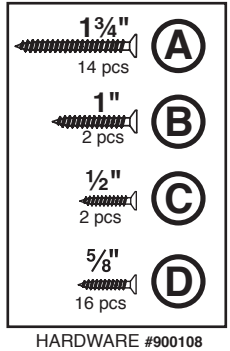
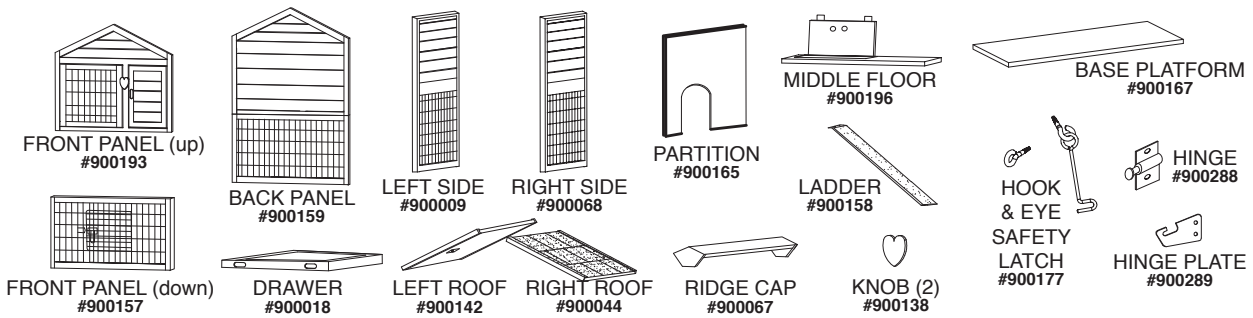




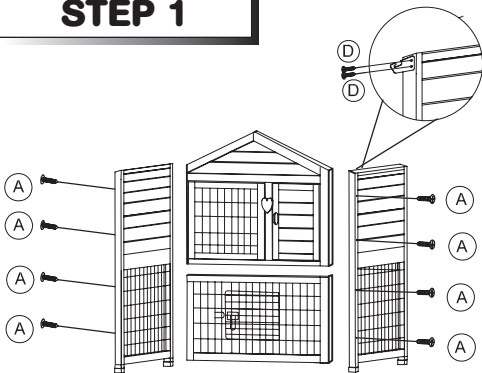
Premium+ Bunny Barn

Assembly Instructions

Item #01519

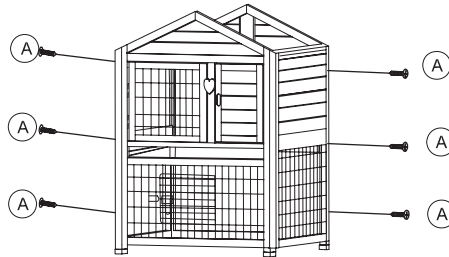


STEP 1



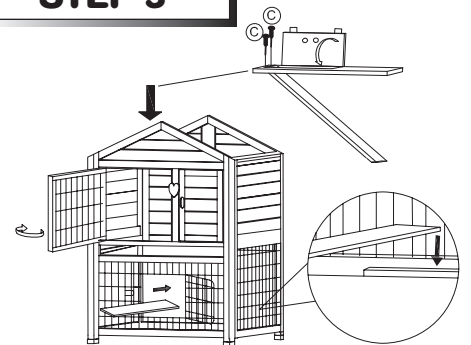
Set up side and front panels. Attach panels using 8- 1 3/4" screws (A). Attach hinge plates to side panels using 8- 5/8" screws (D).

STEP 2



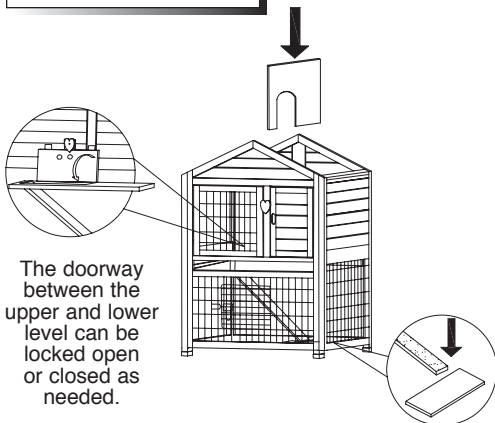
Set up back panel. Attach back panel using 6- 1 3/4" screws (A).

STEP 3



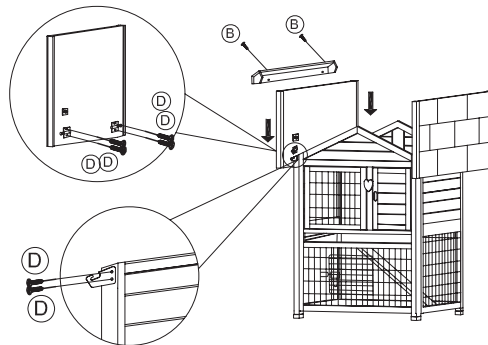
Attach ladder to middle floor using 2- 1/2" screws (C). Insert ladder, middle floor and brace. Place base platform inside lower section so it rests on the lower edge inside.

STEP 4



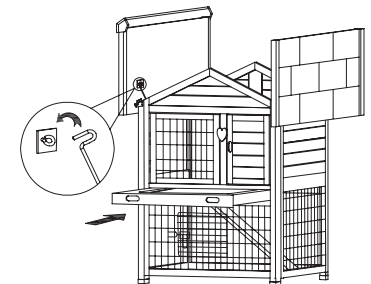
The doorway between the upper and lower level can be locked open or closed as needed. Insert the partition. Ladder rests on the base platform.

STEP 5



Attach hinges to bottom side of roof panels as shown. Secure ridge cap on roof using 2- 1" screws (B).

STEP 6



Screw hook and eye safety latch in place on the roof. Slide drawer in place as shown.

WARE TIP: To preserve the life and beauty of your Bunny Barn, we recommend annual treatment with a non-toxic water-based stain.

If you have any questions or concerns about this product, contact our customer service department at 1-800-295-2243 or cs@waremfginc.com and we will help you with any problems, Mon-Fri 8:00-4:00 MST